

## Why PINNACLE:

We believe that living a meaningful life can be achieved through a sense of community and we feel this can be cultivated by providing a platform where homeowners develop lasting connections with their neighbors.

## Our Mission:

We have made it our mission to create a community with a culture of belonging, purpose, and engagement by connecting homeowners through neighborhood activities, events, and real-time communication.



# A COMMUNITY LIKE NO OTHER...



LOCAL BUSINESS

## Community Center, Library & Café

- Fitness Classes
- Classes
- Game Nights
- Club Gatherings
- Holiday Celebrations
- Teen Nights
- Book Club



INDOOR &  
OUTDOOR FITNESS



AMPHITHEATER

## Amphitheater

- Entertainment
- Outdoor Fitness
- Yard Games
- Food Truck Rallies
- Farmer's Market



WALKING &  
BICYCLE PATHS

## Pool

- Themed Pool Parties
- Water Aerobics



NEIGHBORHOOD  
GATHERINGS



PLACES FOR  
LEISURE

## Community

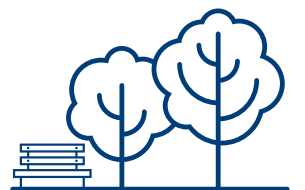
- Decorating Contests
- Block Parties
- Holiday Parades

## Parks

- Toddler Meet & Greet
- Dog Park Meet-Ups
- Outdoor Movies
- Family Field Day
- Picnics



CHARTER SCHOOLS



POCKET PARKS &  
CITY PARKS



LIFESTYLE  
TEAM

## The Lifestyle Team:

The PINNACLE Lifestyle Team will be available to assist homeowners in bringing their community ideas to life. The team will also help coordinate regular events and activities that reach a wide range of interests. Whether you are a social butterfly or you desire something more low key, there is something for you.

**You belong at PINNACLE!**

Check out the PINNACLE website to see the event calendar!

[PinnacleMeridian.com](https://PinnacleMeridian.com)

\*Ideas for lifestyle program are subject to change.

# PINNACLE



# STAY CONNECTED!

## Community Event Calendar



[PinnacleMeridian.com](https://PinnacleMeridian.com)

# PINNACLE

## You Belong Here!



## Imagine Your Life Here . . .

**PINNACLE** is a Brighton Corporation master planned community, conveniently located in the **So|Me District** of Meridian. The community emphasizes stunning homes featuring an **impressive lifestyle**. Imagine waking up, putting on your shoes and heading out for a morning run. After you walk the kids to school, you're off to share a morning coffee with friends at the **community center**. Later in the day you enjoy a game of cornhole with family and neighbors in one of the **pocket parks**, or you head over to the **library** for a community book club meeting. End the day with a family picnic on the **amphitheater** lawn from your favorite local food truck.

**This is life at PINNACLE!**

## Questions About The Pinnacle Life?

**CONTACT:**  
**Lauren Brown**  
**Lifestyle Program Director**  
[lbrown@brightoncorp.com](mailto:lbrown@brightoncorp.com)  
208.972.3625



**BRIGHTON**  
Creating GREAT Places

Brighton reserves the right to make changes or modifications to plans, community design, amenities, open space, neighborhood features and governing documents without notice. Lifestyle amenities and activities are subject to change. Neighborhood plans, landscaping and fencing, community amenities, and interior or exterior renderings are artist's conceptions, are not to scale, and may not accurately depict the homes, lots, roadways, pathways, amenities and community design as they are built. Renderings and brochures are for illustrative purposes only, and are not a part of a legal contract. Community improvements, recreational features, amenities, and lifestyle programs described are based upon current development plans which are subject to change and which are under no obligation to be completed.  
©Brighton Corporation 2022.

**BRIGHTON**  
Creating GREAT Places